

REESE

You *can* take it with you.

INSTALLATION INSTRUCTIONS 350 LB WEIGHT DISTRIBUTING HITCH

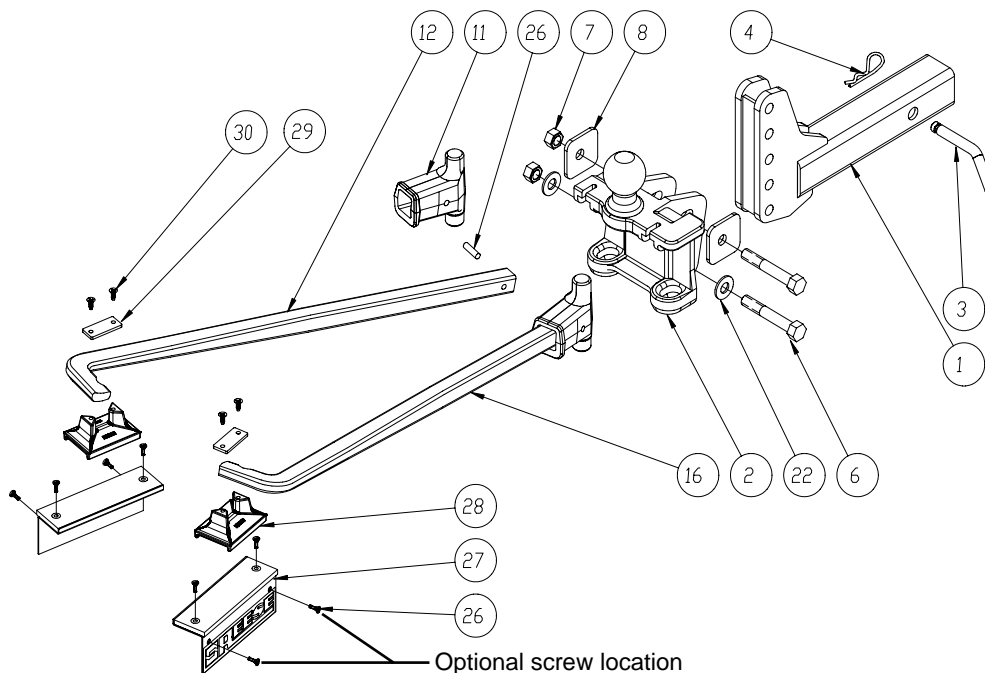
ELKHART, IN., OAKVILLE, ONT.

Product No.

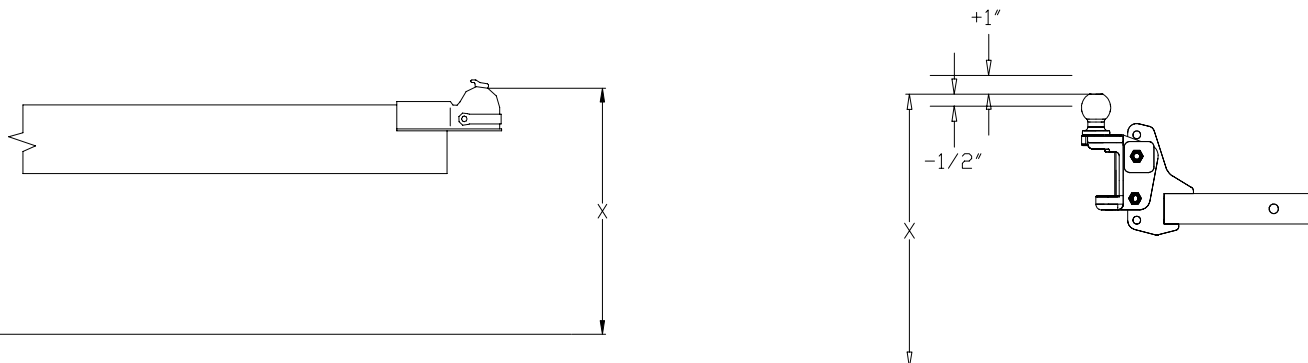
66024

66025

66028



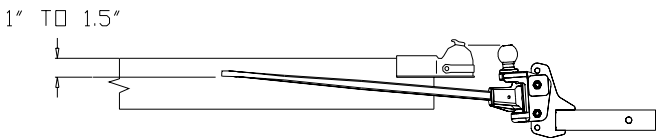
1. MEASURE TRAILER COUPLER HEIGHT- Level trailer and measure from ground to top of ball socket.



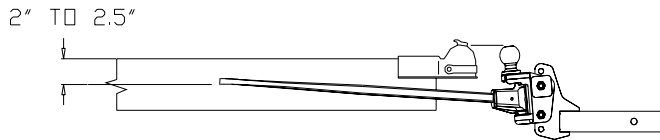
2. ATTACH BALLMOUNT TO HITCH BAR- Insert hitch bar into hitch box and install pull pin and lock in place with spring cotter. Install ball mount onto hitch bar. Move up or down for ball height nearest to coupler height. If halfway between holes, move to the higher position. Install bottom bolt in ball mount with washers on each side and tighten nut enough to hold ball mount position.
3. SET BALLMOUNT ANGLE- With the trailer level, back the tow vehicle to a point where the hitch ball is within a few inches of the coupler. Raise or lower trailer tongue to make the coupler height the same as the ball height. Install the spring bar assemblies in ball mount as shown in illustration, position the ends close to the trailer frame and remove slack by lifting end of bar. Observe the relationship of the bottom of the bar end to the top of the frame. For trailers with light tongue weights (less than 200 lbs.) adjust the ballmount angle so that the bars are approximately 1 to 1.5 inches below the top of the frame.

For Installation Assistance or Technical Help, Call 1-800-758-0869

For trailers with heavier tongue weights (over 200 lbs.) adjust the ballmount angle so that the bars are approximately 2 to 2.5 inches below the top of the frame. Install the top bolt and adjusting washers, rotating the washers so that they are against the shoulder of the ball mount. Torque both top and bottom bolts to 85 ft•lb.

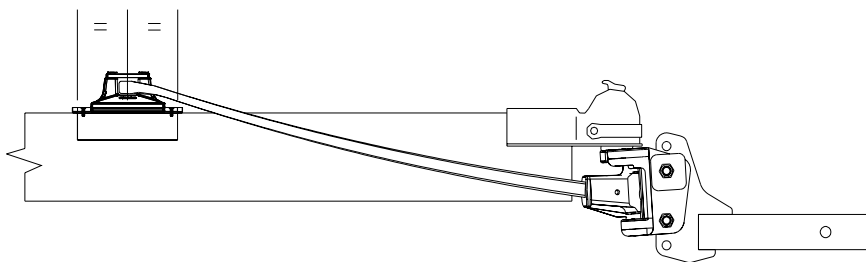


TONGUE WEIGHT LESS THAN 200 LBS



TONGUE WEIGHT MORE THAN 200 LBS

4. COUPLE TRAILER TO VEHICLE- Using the tongue jack, raise the trailer tongue and place coupler over ball, lower the coupler onto the ball, and close the coupler. Drive tow vehicle in a straight line to align trailer and tow vehicle. Assemble slide bracket (28) and retaining plate (29) to spring bars as shown and secure with self-tapping screws (30). Raise the tongue and rear of tow vehicle so that the spring bars can be set on top of the trailer frame. Reinstall spring bar assemblies in ball mount as shown in illustration, lift end of bar and set on top of frame on each side.



5. INSTALL FRICTION PADS AND BRACKETS TO FRAME RAILS- (Make sure trailer and tow vehicle are in line before installing friction pads and brackets) If mounting to top of frame, drill and countersink holes in pads to line up with holes in brackets. Center drilled pads and brackets under spring bars with bracket flange against the outside of the frame, and attach to frame rails by drilling .172 Dia. holes (11/64 drill) and installing 10-32 self-tapping screws.

If trailer manufacturer will not allow holes to be drilled in top of frame rail, use holes on side of bracket. Attach brackets by drilling .172 dia. holes (11/64 drill) through side of frame and install 10-32 self-tapping screws.

LIMITED WARRANTY

Hitches - Custom Receivers - Sway Controls

Reese warrants its Hitches, Custom Hitch Receivers, and Sway Controls from date of purchase against defects in material and workmanship under normal use and service, ordinary wear excepted, for the ownership life of the original consumer purchaser.

Reese will replace FREE OF CHARGE any part which proves defective in material or workmanship when presented to any Reese dealer, Reese Warehouse, or returned to factory, TRANSPORTATION CHARGES PREPAID, at the address below. THIS WARRANTY IS LIMITED TO DEFECTIVE PARTS REPLACEMENT ONLY. LABOR CHARGES AND/OR DAMAGE INCURRED IN INSTALLATION OR REPLACEMENT AS WELL AS INCIDENTAL AND CONSEQUENTIAL DAMAGES CONNECTED THEREWITH ARE EXCLUDED.

Some states do not allow the exclusion or limitation of incidental or consequential damages, so the above limitation or exclusion may not apply to you.

Any damage to the Hitch, Custom Hitch receiver or Sway Control as a result of misuse, abuse, neglect, accident, improper installation, or any use violative of instructions furnished by Reese Products, WILL VOID THE WARRANTY.

This warranty gives you specific legal rights, and you may also have other rights which vary from state to state. In the event of a problem with warranty service or performance, you may be able to go to a small claims court, a state court, or a federal district court.

Reese Products, Inc.
51671 State Road 19-N
Elkhart, IN 46514 USA

Reese Products of Canada, Ltd.
475 Wycroft Road
Oakville, Ontario L6K 2H2 CANADA