

SPORTFRAME[®]

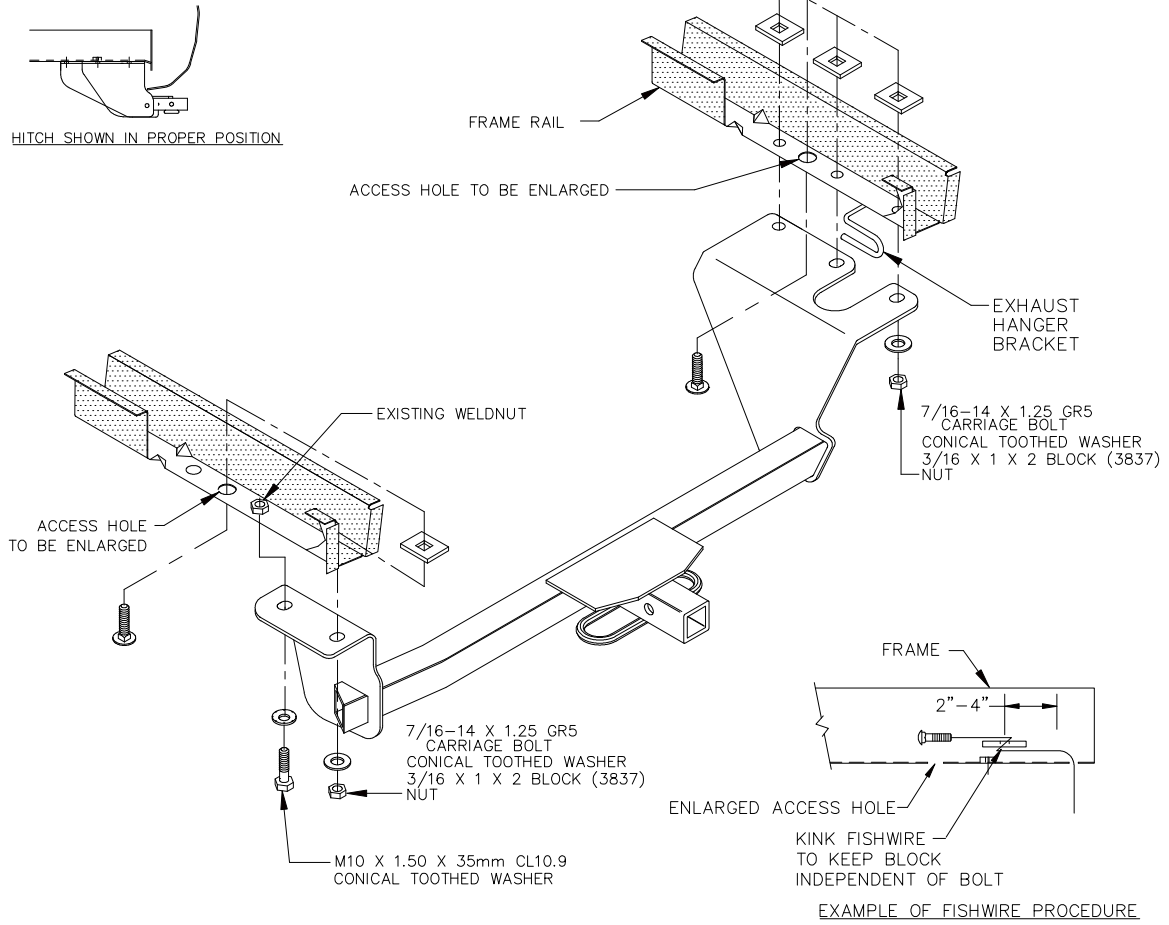
INSTALLATION INSTRUCTIONS

VEHICLE	HITCH NO.
CHRYSLER SEBRING CONVERTIBLE	24638
	60332
	77184

EQUIPMENT REQUIRED:
WIRING ACCESS LOCATION: PC3, PC4
DRILL BITS:

2000 LB MAX GROSS TRAILER WT
 200 LB MAX TONGUE WEIGHT
 DO NOT EXCEED TOWING VEHICLE RATINGS

WRENCHES: (TIGHTEN ALL FASTENERS WITH TORQUE WRENCH) 11/16", 16mm



1. LOWER EXHAUST SYSTEM BY DISCONNECTING THE RUBBER EXHAUST HANGERS FROM THE EXHAUST HANGER BRACKET.
2. ENLARGE THE ACCESS HOLE IN FRAME AND FISHWIRE BLOCK AND BOLT ASSEMBLIES AS SHOWN INTO FRAME RAIL.
3. RAISE HITCH INTO POSITION AND INSTALL THE 10mm BOLT PROVIDED INTO EXISTING WELDNUT.
4. TIGHTEN ALL FASTENERS AS LISTED BELOW, AND REINSTALL THE EXHAUST SYSTEM.

TIGHTEN 7/16-14 GR5 FASTENERS TO 50 LB.-FT.
 TIGHTEN 10mm CL10.9 FASTENERS TO 38 LB.-FT.

<p>COMPLETE HITCH INCLUDES</p> <p>3596 DRAWBAR</p>	<p>DRAWBAR REPLACEMENT KIT (INCLUDES PIN & CLIP)</p> <p>3591</p> <p>NOTE: REPLACEMENT DRAWBAR AVAILABLE ONLY IN KIT. PINS & CLIPS AVAILABLE SEPARATELY.</p>
---	--

USE ONLY THE DRAWBAR SHOWN FOR CORRECT BUMPER CLEARANCE AND HEIGHT.
 DRAWBAR MUST BE USED IN THE RISE POSITION ONLY.
 REMOVE DRAWBAR WHEN NOT TOWING
 TO PROTECT DRAWBAR OPENING IN HITCH WHEN NOT TOWING,
 INSERT COVER #2211 (PURCHASED SEPARATELY).

THIS PRODUCT COMPLIES WITH SAFETY SPECIFICATIONS AND REQUIREMENTS FOR CONNECTING DEVICES AND TOWING SYSTEMS OF THE STATE OF NEW YORK AND V.E.S.C. REGULATION V-5.

APPROX WEIGHT (LB.)	23	FASTENER KIT NO.	01130-972
---------------------	----	------------------	-----------

NOTE: Check hitch frequently, making sure all fasteners and ball are properly tightened. If hitch is removed, plug all holes in trunk pan or other body panels to prevent entry of water and exhaust fumes. A hitch or ball which has been damaged should be removed and replaced. Observe safety precautions when working beneath a vehicle and wear eye protection. Follow car maker's specs for maximum trailer weight and tongue weight. Do not cut access or attachment holes with a torch.

